

# IRPCS - Sound signals



The term "short blast"  
means a blast of 1 second



The term "prolonged blast"  
means a blast of 4 - 6 seconds

## Sound signals in good visibility



Turning to Starboard



Turning to Port



Engines in reverse



What are your intentions



I intend to overtake  
on your starboard side



I intend to overtake  
on your port side



Vessel being overtaken  
response



Vessel approaching a  
blind bend may signal

## Sound signals in poor visibility, made every 2 minutes



Power driven vessel, making way



Power driven vessel, not making way



All other vessels, including:

***Sailing, constrained by draught,  
fishing, trawling, towing and pushing***



Towed vessel (in response):



Pilot vessel on duty



A vessel at anchor warning an  
approaching vessel of collision

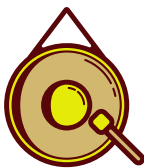


5 seconds

For a vessel at anchor less than 100m



5 seconds  
each



A bell followed by a gong - for a vessel  
at anchor more than 100m